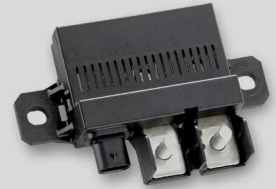


## E-Relay as bidirectional switch for Pb Aux battery



### PRODUCT ADVANTAGES:

- Fast switching
- No noise and no mechanic wear due to semiconductor switches
- Lightweight design: < 50 % weight then comparable power relays
- Advanced safety functions (ASIL, self-diagnostic) can be realized
- Low power loss

### USE CASES:

- Bidirectional battery switch for 12 V / 48 V systems
- In combination with a Q-Diode as advanced system
- Safe separation of high power applications
- Up to 100 A depending on temperature conditions

Eberspächer Controls Landau GmbH & Co. KG

Max-Planck-Str. 3 | 76829 Landau | GERMANY | Phone: +49 6341 9880-0 | info-controls@eberspaecher.com | www.eberspaecher.com